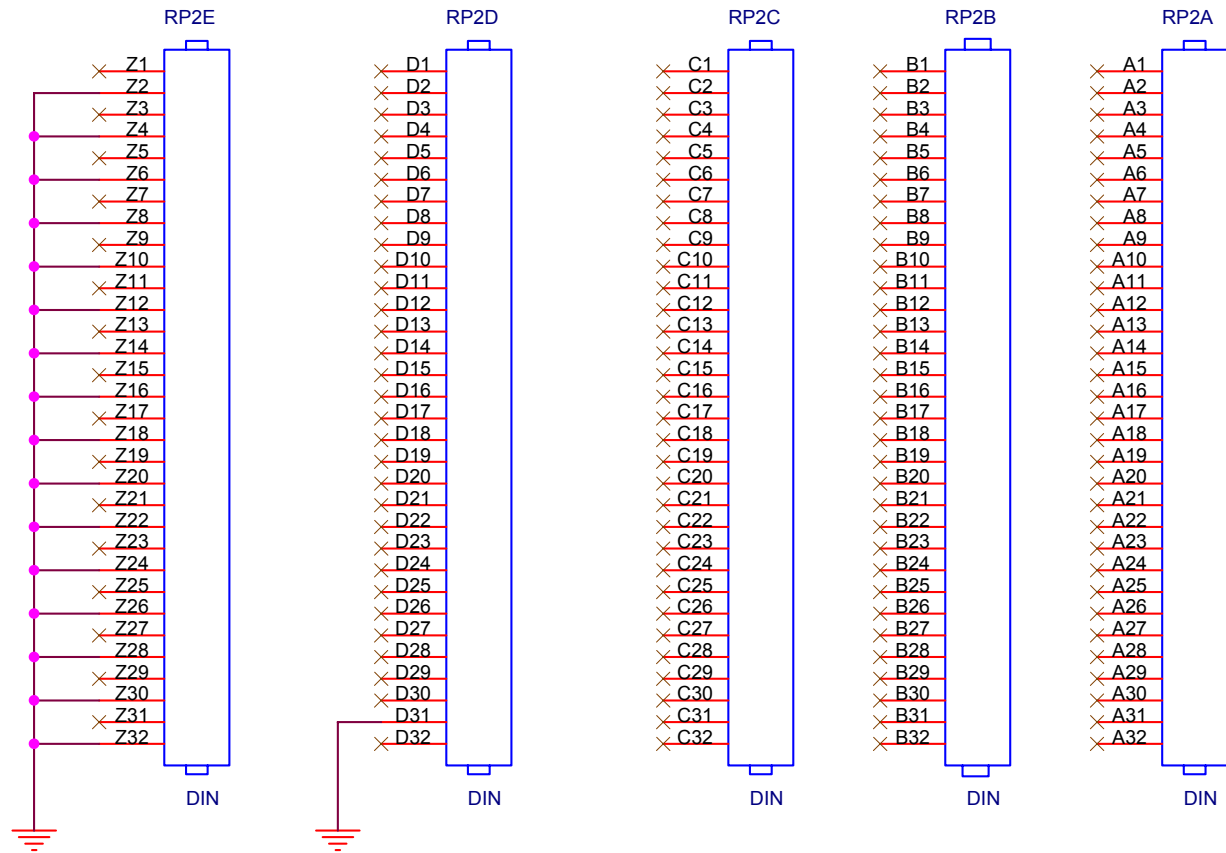
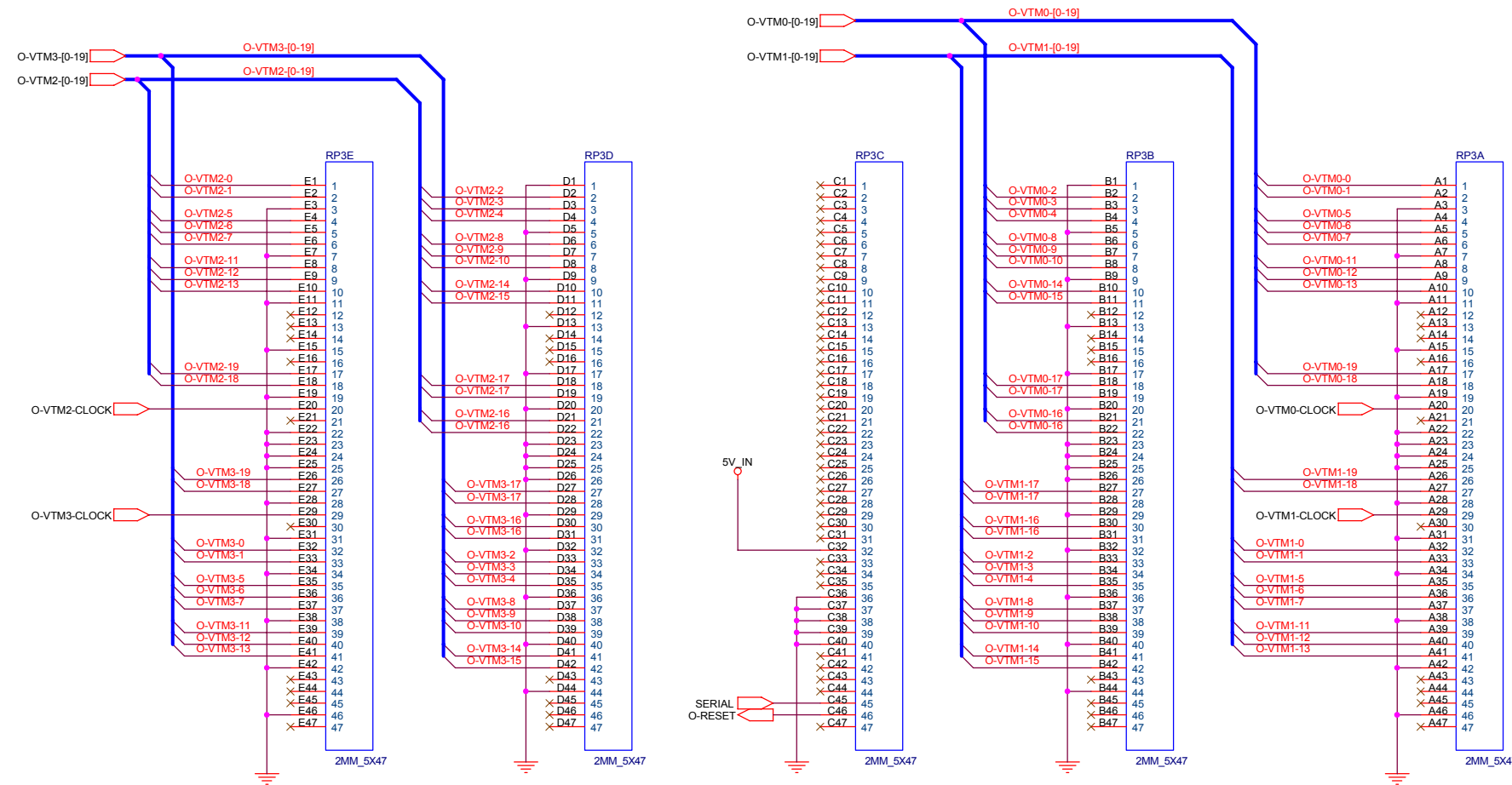


Boston University Electronics Design Facility		
Board Name VTM Emulator		
Size A	Page Name RP0	Rev A
Date: Tuesday, April 23, 2002	Sheet 3	of 7



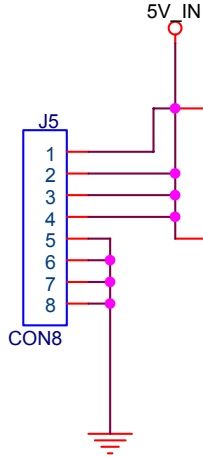
Boston University Electronics Design Facility		
Board Name VTM Emulator		
Size A	Page Name RP2	Rev A
Date:	Tuesday, April 23, 2002	Sheet 4 of 7



O-VTMx-16 is the CAV signal
 O-VTMx-17 is the DAV signal
 O-VTMx-18 is the LNKRDY* signal
 O-VTMx-19 is the ERROR signal

Boston University Electronics Design Facility			
Board Name VTM Emulator			
Size B	Page Name RP3	Page Number 5 of 7	Revision Rev A
Date: Wednesday, April 24, 2002		Sheet 5 of 7	

0.156 IN MOLEX
POWER
CONNECTOR



5V_IN

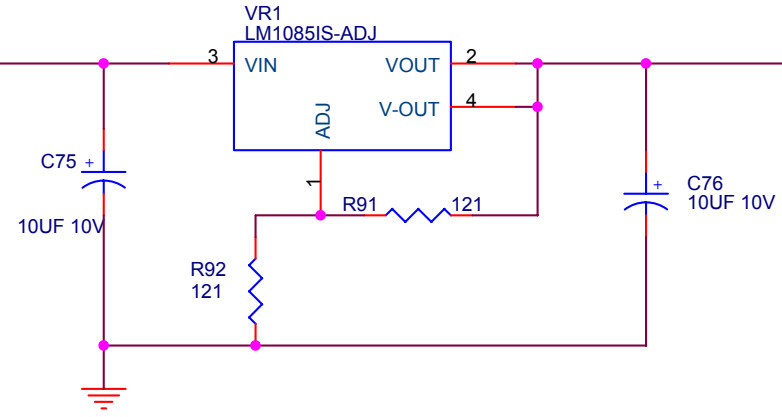
F2
FUZE

F3
FUZE

5V

2.5V REGULATOR FOR FPGA CORE

2.5V



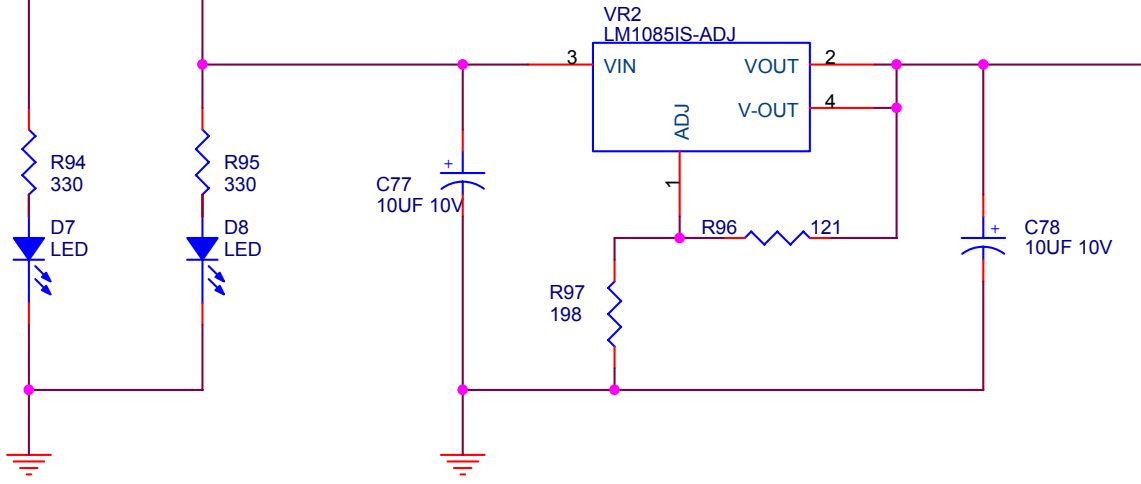
C75
10UF 10V

VR1
LM1085IS-ADJ

C76
10UF 10V

3.3V REGULATOR FOR DIGITAL SECTION

3.3V



C77
10UF 10V

VR2
LM1085IS-ADJ

C78
10UF 10V

D7
LED

D8
LED

R94
330

R95
330

R97
198

R96
121

Boston University Electronics Design Facility

Board Name
VTM Emulator

Size A	Page Name Power	Rev A
-----------	--------------------	----------

Date: Wednesday, April 24, 2002 Sheet 7 of 7