

PLACE EXACTLY  
AS SPECIFIED  
ON TOP SIDE

JP1 (Type A)

JPX (Type B)  
Feedthru  
Only

JPY (Type L)  
Feedthru  
Only

JPZ (Type B)  
Feedthru  
Only

ALL OTHER COMPONENTS IN THIS AREA ON BOTTOM  
(bypass caps may be placed on top)

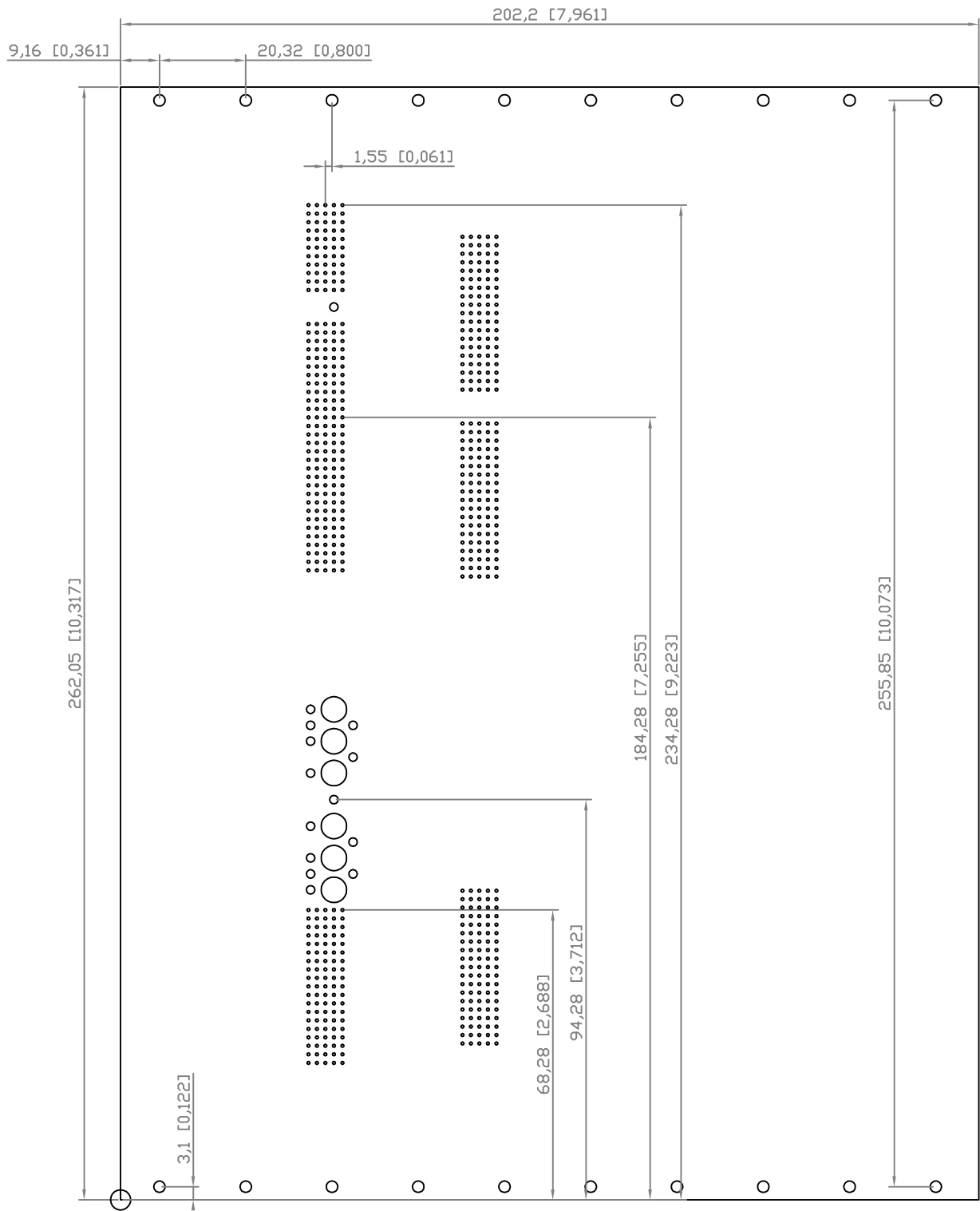
J5-J8, J9-J12, J13-J16 placed as one Type B  
(each) with unused pins unconnected

Board width may be  
increased/decreased  
in steps of 20.32mm  
(0.8 in) as needed

SERIAL LINK DAUGHTERBOARDS  
ON BOTTOM FACING RIGHT EDGE

SCL RECEIVER  
DAUGHTER BOARD

		BOSTON UNIVERSITY Electronics Design Facility	
Drawn By:	E. Hazen	DSAT Tester	
		Suggested Layout - -	
		...Tester/mech.dwg	2004-05-03 REV: A



		BOSTON UNIVERSITY Electronics Design Facility	
Drawn By:	E. Hazen	DSAT Tester	
		Suggested Layout	
		-	
		-	
		...Tester/nech.dwg	2004-05-03 REV: A